



FY 2008-09

LGED's Annual Report



Local Government Engineering Department
Local Government Division
Local Government, Rural Development & Cooperatives

December '09



FY 2008-09

LGED's Annual Report

Local Government Engineering Department
Local Government Division
Local Government, Rural Development & Cooperatives

December '09

Annual Report : FY 2008-09

Frontispiece Identity



Bulla Union Parishad Complex Building, Habigonj



Bus Terminal Narsingdi Pourashava



Nilphamari-Dimla-Dalia R & H via Shutibari Road, Dimla, Nilphamari



One 41.23 m long bridge on the Bhabki RHD-Raiganj GC via Beeltal Bazar Road, Melandah, Jamalpur



Drain Constructed under Kushtia Pourashava



Spillway and reservoir, Shahasradhara Sub-project, Sitakunda, Chittagong

Top Supervision

Mr. Md. Wahidur Rahman
 Chief Engineer
 Local Government Engineering Department

Editing & Publication

PM & E Unit
 Local Government Engineering Department
 Agargaon, Sher-e-Bangla Nagar, Dhaka-1207

Index	
Description	Page No.
1.0 Introduction.....	1
1.1 Major responsibilities of LGED.....	1
1.2 Major activities (on-going and already completed) of LGED.....	2
2.0 Planning Related.....	3
2.1 Rural Road Master Plan.....	3
2.2 Objectives of Rural Road Master Plan.....	4
2.3 Important information of the Rural Road Master Plan.....	4
3.0 Design Related.....	4
3.1 A list of the designs prepared during 2008-09 by the Design Unit.....	5
4.0 Monitoring and Evaluation Related.....	6
4.1 Implementation.....	6
4.1.1 Number of projects and their allocations during 2008-09.....	7
4.1.2 List of LGED ongoing projects included in the Revised Annual Development Programme of 2008-09.....	8
4.1.3 List of 9 projects completed during 2008-09.....	14
4.1.4 List of 17 New Projects approved for implementation during 2008-09.....	14
4.2 Monitoring and Evaluation.....	15
4.2.1 Report preparation.....	15
4.2.2 Monthly Pre-ADP Review Meeting.....	16
4.2.3 Monthly ADP Review Meeting.....	16
4.2.4 Annual Review Meeting for Fiscal Year 2008-09.....	16
4.2.5 Providing informations to the Office of the Prime Minister / Chief Advisor, Minister / Sate Minister and the National Assembly Secretariat.....	17
4.2.6 Review and actions taken on news published in the media.....	17
4.2.7 Review of Reports Furnished By the Inspection Teams during 2008-09.....	18
4.2.8 Rural Infrastructure Development.....	19
4.2.9 Improvement of Urban infrastructure.....	22
4.2.10 Development of water resources infrastructure.....	28
4.3 LGED's Involvement in the Development Activities of Other Ministries.....	32
4.3.1 Statement of Ministry-wise allocations, fund release and expenditures.....	32
4.3.2 Particulars of the projects of other Miniseries implemented by LGED during 2008-09.....	33
4.3.3 Programmes implemented for the Agriculture Ministry.....	34
4.3.4 Programmes implemented for the Ministry of Chittigong Hill Tracts Affairs.....	35
4.3.5 Programmes implemented for the Ministry of Water Resources.....	36
4.3.6 Programmes implemented for the Ministry of Primary and Mass Education.....	36
5.0 Maintenance Programmes.....	37
5.1 Allocations and expenditures of 2008-2009 on maintenance.....	37
6.0 Tree Plantation Programme.....	39
6.1 Information of tree planted by LGED during 2008-09.....	39

Annual Report : FY 2008-09

Description	Page No.
7.0 Poverty Alleviation	42
7.1 Poverty alleviation through creation of employment opportunities.....	42
7.2 Poverty alleviation programmes through urban development.....	42
7.3 Poverty alleviation through employment generation for women/distressed women.....	44
7.4 Poverty alleviation through micro-credit programmes.....	44
8.0 Administrative and Financial Management	45
8.1 Administrative.....	45
8.1.1 Creation of posts in the organogram and confirmation of service.....	45
8.1.2 Promotion of officers/staffs.....	45
8.1.3 Disciplinary actions.....	46
8.2 Revenue income.....	48
8.3 Financial audit.....	48
9.0 Human Resource Development	49
9.1 Statement of trainees.....	49
9.2 Overseas training, seminars and workshops.....	49
10.0 Quality Control	52
10.1 Quality Control Laboratories.....	52
10.1.1 Test facilities available in LGED's Quality Control Laboratories.....	52
10.1.2 Testing facilities available in LGED's Environmental Laboratories.....	53
10.1.3 Equipment procured for Quality Control Laboratories during 2008-09.....	54
11.0 LGED's Other Significant Programmes	54
11.1 Activities of the Procurement Unit.....	54
11.2 Activities of GIS & MIS Unit.....	54
11.3 Activities of Municipal Support Unit (MSU) and Urban Management Support Unit (UMSU).....	55
11.4 Road Safety Unit.....	57
11.5 Rural Development Engineering Center (RDEC).....	58
11.5.1 RDEC building construction and its functioning.....	58
11.5.2 Programmes run by LGED in continuation with RDEC.....	60
11.6 Rural Employment and Road Maintenance Programme (RERMP).....	60
11.7 Community-Based Resource Management Project.....	61
11.8 Higher involvement of Labour Contracting Societies (LCS) in the infrastructure development activities.....	63
11.9 Gender and Development (GAD).....	65
12.0 Visits of foreign missions during 2008-09	69
13.0 Seminars and Workshops	72
14.0 Publications made by LGED during 2008-09	73
15.0 LGED's Achievements during 2008-09	74

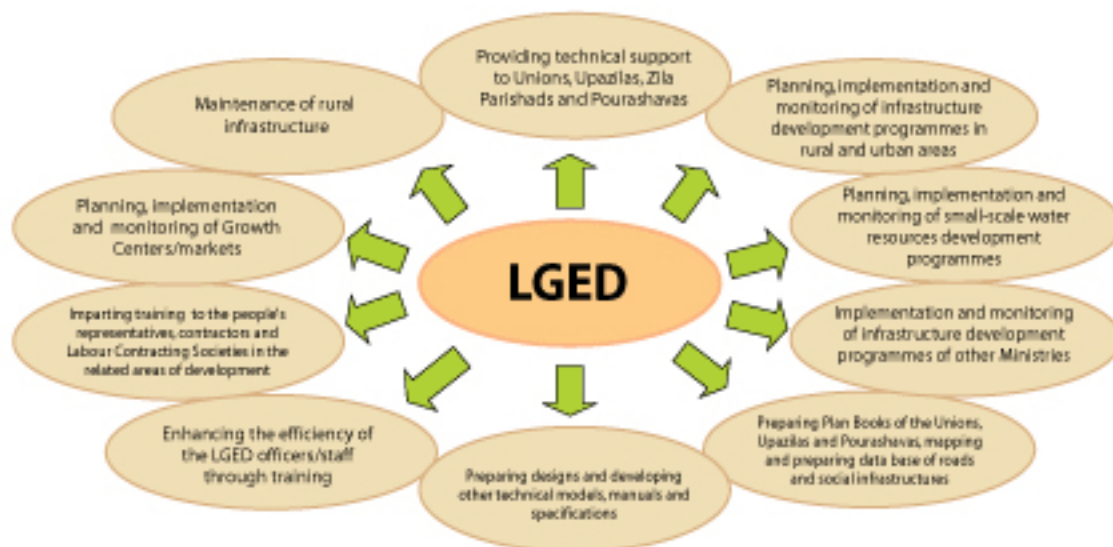
Annual Report of LGED activities carried out during the fiscal year 2008-09 by the Local Government Engineering Department

1.0 Introduction

The Local Government Engineering Department (LGED) has been rendering invaluable services towards providing technical support to the Local Government Institutions (LGI) and creating employment opportunities for the rural people vis-a-vis improving country's socio-economic condition through development of rural communication infrastructure and small-scale water resources development. LGED also plays a vital role in implementing national programmes addressed towards maintaining eco-system equilibrium and poverty alleviation. Own resources of the Bangladesh Government and the financial support from the Development Partners are LGED's principal sources of financing to implement its different projects and programmes. LGED attaches top priority to the policy-guidelines on balanced development all over the country in terms of the Rural Development Strategy, Urban Management Policy Statement, National Water Policy and the Poverty Reduction Strategy (PRS).

1.1 Major responsibilities of LGED

LGED implements various development programmes of the Ministry of the Local Government, Rural Development & Co-operatives and the other Ministries as well. Following is a presentation of its major functions.

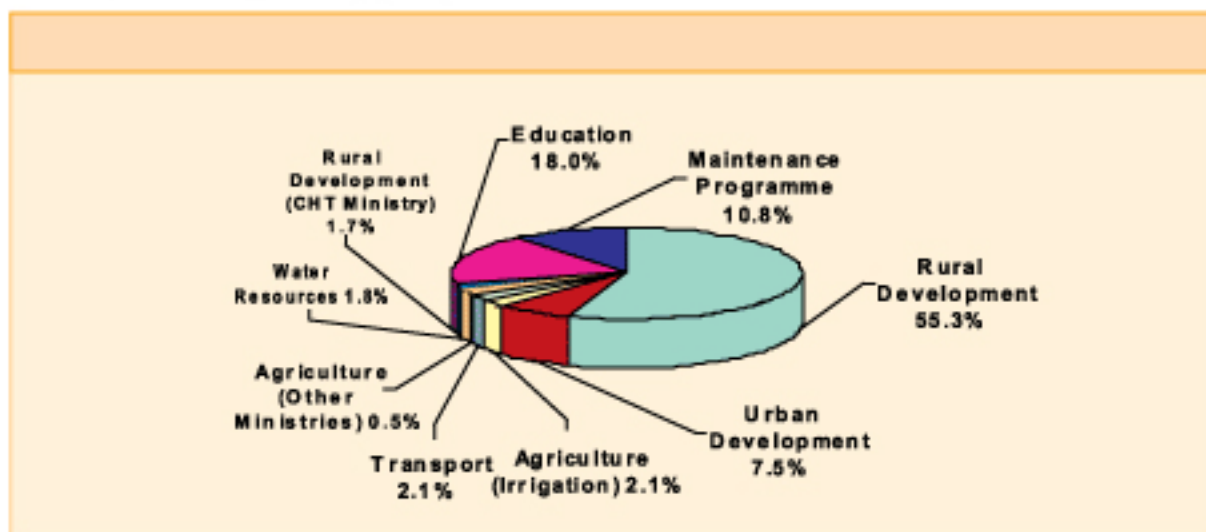


In order to carry out the stated responsibilities, LGED has established a workforce consisting a total strength of 10,302 in the different ranks and positions of which 146 are working at the headquarters level (1.42% of the total manpower), 24 at the regional level (0.24% of the total manpower), 854 at the district level (8.30% of the total manpower), 204 are on deputation in the District Councils (1.98% of the total manpower) and 9,074 at the Upazila level (88.06% of the total manpower).

1.2 Major activities (on-going and already completed) of LGED

LGED implements various programmes on improvement/construction/re-construction, rehabilitation and maintenance of infrastructure with financial assistance from both GOB and Development Partners. LGED implemented programmes worth Tk. 45.1425 billion as against a total allocation of Tk. 46.9888 billion received during 2008-09, which constituted about 19.6% of the total allocation for the Government's Annual Development Programme (ADP) of the year.

LGED achieved physical and financial progress to the extent of 98% and 96% respectively on the implementation of physical programmes drawn up during 2008-09. The pie-chart shown below demonstrates LGED's allocations under different Sectors of the Revised Annual Development Programme (RADP) of FY 2008-09:



Major activities of LGED have been stated in the following Table:

Rural Infrastructure	Urban Infrastructure	Development of Small scale Water Resources
<ul style="list-style-type: none"> ➤ Construction/reconstruction/rehabilitation of road ➤ Construction/re-construction of bridge/culvert ➤ Improvement of Growth Center/market ➤ Construction of landing stage/jetty ➤ Construction of Union Parishad Complex ➤ Construction of Upazila Parishad Complex ➤ Construction/re-habilitation of cyclone/flood shelter ➤ Tree plantation programme ➤ Micro-credit programme ➤ Agriculture, fisheries and live stock development ➤ Maintenance of infrastructure 	<ul style="list-style-type: none"> ➤ Construction/reconstruction of road/foot-path. ➤ Construction of bridge/culvert ➤ Construction/re-construction of drain ➤ Construction of bus/truck terminal ➤ Improvement of market ➤ Construction of community latrine / sanitary latrine ➤ Installation of tube-well ➤ Micro-credit programme ➤ Solid-waste management ➤ Slum improvement programme ➤ Maintenance / rehabilitation of infrastructure 	<ul style="list-style-type: none"> ➤ Construction/reconstruction of embankment ➤ Construction of sluice gate ➤ Construction of rubber dam ➤ Excavation and re-excavation of canal ➤ Construction/reconstruction of flood control embankment ➤ Buried-pipe irrigation Lined Canal ➤ Permanent type surface irrigation drain.

Besides the above programmes of the Local Government Division, LGED has also been successfully implementing a good number of development projects of the Primary and Mass Education Ministry, Agriculture Ministry, Fisheries and Live-stock Ministry, Water Resources Ministry and the Ministry of Chittagong Hill Tracts Affairs. Implementation of these development projects during 2008-09 under the afore-mentioned Ministries created at the same time a huge employment directly or indirectly complementing the overall socio-economic development efforts of the country. Through implementation of development programmes, direct employment for more than 122 million man-days has been created during 2008-09. By engaging the distressed women under the Rural Road Maintenance Programmes of LGED and through construction of Women Trade Centers within some of the specific Growth Centers, self-employment opportunities have opened up for the rural women. In addition to the development of infrastructure, LGED has also been playing a certain role in creating employment opportunities through micro-credit programmes wherein poverty alleviation is the basic essence.

In order to confirm quality and timely implementation of the development programmes, 6 inspection teams at the ministerial level, 10 Superintending Engineers at the regional level and 10 inspection teams at LGED headquarters level make regular visits to various development programmes. LGED also conducts training programmes for its officials, representatives of the Local Government Institutions, beneficiaries, contractors and Labour Contracting Societies under its Human Resource Development Programme.

Major development programmes of LGED taken up during financial year 2008-09

2.0 Planning Related

2.1 Rural Road Master Plan

On reviewing the country's full inventory on Rural Physical Infrastructure in the context of the last Five Year Plan, the current Poverty Reduction Strategy Paper (PRSP) and the road re-classification lately approved by the Planning Commission, due weightage is given on balanced development and accordingly LGED formulates and implements its infrastructure development projects keeping in mind the current overall development status of the different districts/regions, total demand, backwardness, availability of fund etc. LGED updates the Union Plan Books and the Upazila Plan Books using the GIS technology while setting priorities for its infrastructure schemes.

Initiatives have been taken recently to prepare a long-term plan for 20 years over the period 2005-15 with the objectives to implement overall rural development programmes, especially the improvement of rural communication system that has a true impact upon an increase in the agricultural production, improvement of the marketing of agricultural commodities, enhancement of the institutional strength of the local government management and establishment of good governance. In this end, the Upazila-wise Base Maps have been updated with the involvement of the LGED's field level Executive Engineers and Upazila Engineers and the Chairmen and Members of the Union Parishads at the field level.

LGED has already prepared an integrated Rural Road Master Plan by using data provided by the Upazilas and adopting the GIS technology. The Government has already stamped its vetting of this Master Plan.

Annual Report : FY 2008-09

2.2 Objectives of Rural Road Master Plan

1. To identify a timely, effective, and uninterrupted rural road network to improve the rural life style;
2. To provide all-weather access to all Growth Centers, all Union Parishad Complexes, most of the rural markets and other service delivery centers of the country;
3. To improve rural accessibility with a view to increase agriculture production and to facilitate marketing of different agricultural produce;
4. To play a supportive role in alleviating poverty through employment generation and increased economic activities in the rural areas;
5. To complement strengthening of the Local Government Institutions and promoting good governance at the local level.

2.3 Important information of the Rural Road Master Plan

Summarized rural infrastructure data:

Sl. No.	Major components	Total length/ number	Total length/ number improved		FY 2008-09		Un-improved length/ number	Length to be improved/ number
			Fully (metalled)	Partially (HBB)	Target	Achievement		
1	Upazila Road:							
	Road (km)	36,166	23,728	3,015	1,186	1,162	9,423	12,438
	Bridge/Culvert (m)	382,293	314,611	-	14,649	13,727	67,682	67,682
2	Union Road							
	Road (km)	42,329	13,741	3,888	1,302	1,269	24,700	28,588
	Bridge/Culvert (m)	330,409	254,578	-	8,029	8,029	75,831	75,831
3	Rural Road Type-A							
	Road (km)	94,059	10,438	5,745	520	508	77,876	83,621
	Bridge/Culvert (m)	447,396	262,107	-	7,226	7,226	185,289	185,289
4	Rural Road Type-B							
	Road (km)	77,276	2,571	2,403	347	338	72,302	74,705
	Bridge/Culvert (m)	248,929	110,775	-	4,818	4,818	138,154	138,154
5	Growth Center (Number)	2,100	1,459	-	135	122	641	641
6	Rural Market (Number)	15,263	1,236	-	90	83	14,027	14,027
7	Union Parishad Complex (Number)	4,498	1,941	-	236	137	2,557	2,557

3.0 Design Related

The following are the major functions of the LGED's Design Unit:

1. To prepare architectural and structural designs of infrastructure like bridge, culvert, building, Michioniki, market, cyclone center, school building, bus terminal, health complex, auditorium, Union Parishad Complex, Model Thana, Poura Bhaban, residential quarters for the Executive Officers and Secretaries of the Zila Parishads etc. and to assist in the designing of infrastructure of the Local Government Institutions.

2. To review the soundness of the structural and architectural designs of infrastructure prepared by the consultants under different projects.
3. To preserve soft copies of the plans and designs of various infrastructure.
4. To provide necessary advice in resolving field level design-related issues and to prepare the designs and drawings on making ground verification.
5. To provide training to the field level engineers on design-related software e.g. AutoCAD, STAAD Pro etc.

3.1 A list of the designs prepared during 2008-09 by the Design Unit

Serial No.	Infrastructure	Number
1.	Bridge	80
2.	Auditorium	5
3.	Municipal super-market	30
4.	Municipal office building	10
5.	Primary school (New design)	30
6.	Primary school (Sub-structure revision)	290
7.	Union Parishad complex (Sub-structure revision)	20
8.	Duk Bungalow	10
9.	Model Thana	6
10.	Language Heroes museum	1
11.	Institute of Urban Anthropology	1
12.	Electoral Database Station	All Upazilas
13.	District Election Commission office	All Districts
14.	Election Commission's zonal office	6
15.	Model Thana main building	6
16.	Khulna Zila Parishads monument	1
17.	Modhusudan Sritee museum	1
18.	Cox'sBazar library-cum-auditorium complex	1
19.	Modification of school-cum-cyclone shelter	Coastal Area
20.	Modification to Hatir Jheel Drawings	1
21.	Feni Zila Parishad auditorium complex	1

Serial No.	Infrastructure	Number
22.	Patuakhali District LGED Bhaban & residence of Executive Engineer	1
23.	Upazila complex	All Upazilas
24.	Guest house	3
25.	Barisal Jibanananda memorial library	1
26.	Moulvibazar library-cum-public hall complex	1
27.	Pirojpur Government college building	1
28.	Residence of Assistant Engineer	3
29.	CNG station of LGED	2
30.	Pabna district bus stand	1
31.	Comilla district bus stand	1
32.	Laxmipur children park	1
33.	Others	6

A marked improvement in quality took place during 2008-09 in the overall activities of the LGED Design Unit. From the start of the last fiscal year, special emphasis has been given on the application of Structural Analysis and Design Software and it has been continuing irrespective of infrastructure's types and nature.

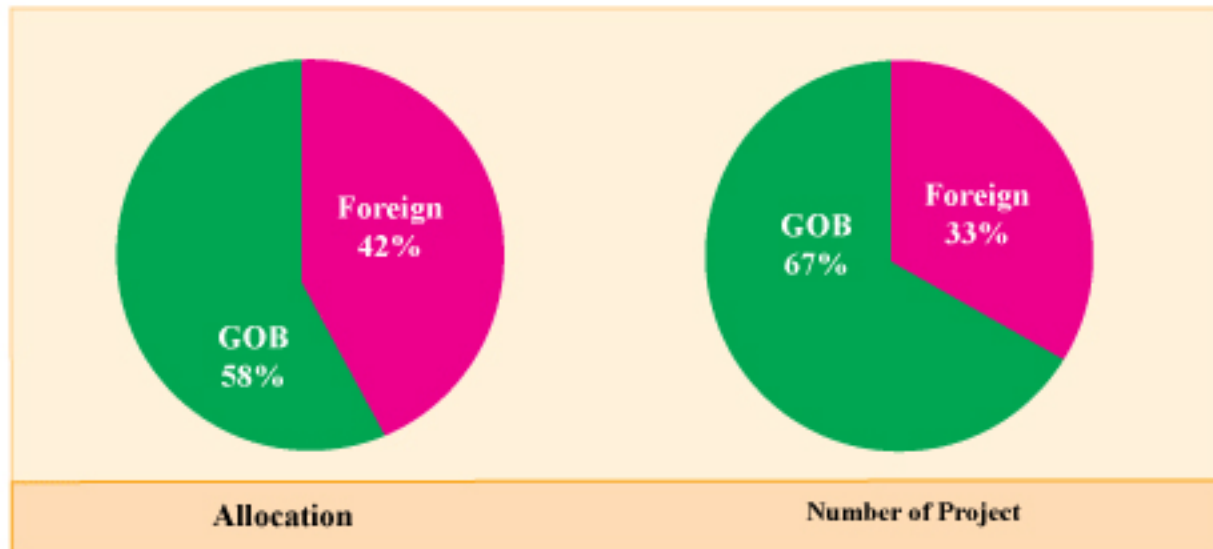
The ethics of "contribution by all in working" has been increasingly growing through mutual cooperation, interaction and collective application of knowledge and experiences of all officials and experts working in the Design Unit. The district Executive Engineers have been provided with appropriate technical guidance on preparation and submission of proposals for bridge construction either.

4.0 Monitoring and Evaluation Related

4.1 Implementation

66 projects were under implementation by the LGED under the Local Government Division during the fiscal year 2008-09 of which 44 were GOB financed and 22 were foreign-aided. Allocations for the said 66 projects was Tk. 31.544 billion against which Tk.29.961 billion (95%) was spent on attaining an average physical progress of 97.2%. All such programmes were implemented in accordance with the provisions of The Public Procurement Act, 2006 and The Public Procurement Rules, 2008 (PPR-2008). The field level officers/staff have mainly played the key role towards implementation of all these development programmes. LGED's PM&E Unit carries out monitoring and evaluation of programme implementation.

Pie-chart showing at a glance the number and the allocations in percentage of all projects implemented by LGED during 2008-09



4.1.1 Number of projects and their allocations during 2008-09

Sector-wise summary on allocations, fund release and expenditures of the 66 projects implemented by LGED as included in the Revised ADP of 2008-09 has been given below:

(Taka in billion)

Sl No.	Sector	Number of projects	Project costs	Fiscal year 2008-09			
				Revised Allocation	Funds released (% of allocation)	Expenditures (% of allocation)	Physical progress
(1)	Rural Development and Institution	50	196.9341	26.0018	24.9536 (96%)	24.5034 (94%)	97%
(2)	Physical Planning, Water Supply and Housing	9	40.817	3.5468	3.5466 (100%)	3.4898 (98.4%)	99%
(3)	Agriculture	3	9.16	0.9999	0.998 (99.9%)	0.9927 (99%)	100%
(4)	Transport	4	11.5656	0.9951	0.9951 (100%)	0.9752 (98%)	99%
Total : (1+2+3+4)		66	258.4767	31.5436	30.4933 (97%)	29.9611 (95%)	97.2%